



Archi-Foam Sdn Bhd
Lightweight Moulding (708502-U)



***Architectural
Lightweight
Moulding***



The Beauty of *Architectural Lightweight Moulding*

Architectural Lightweight Moulding changes and transforms spaces with plain-looking walls into elegant and sophisticated décor. If your home is traditional in design, architectural lightweight moulding can transform a nondescript surface into a focal point.

Architectural Lightweight Moulding is one of the ways to set your house apart and increase perceived value.

Architectural Lightweight Moulding has been applied to traditional and contemporary properties with excellent results.

Architectural Lightweight Moulding can make an impressive statement in the entry and in other formal areas of the home at a competitive price and expeditions.

Architectural Lightweight Moulding has become the main application in most countries. We use state-of-the-art technology to offer valuable support to our customers. We design and fabricate any shape and size.





About Us

Archi-Foam Sdn Bhd offers superior quality of Archi-Foam architectural lightweight moulding products. We are a manufacturer and we supply the stock or custom architectural coping, cill, hood, projection panels, bollard, keystone, arches, fin, corbel, etc all according to the designer design creativity.

Archi-Foam architectural lightweight moulding products are available in a variety of architectural building materials for the commercial, residential and industrial building accordance to the area of application and requirement of the designer with Archi Foam moulding lightweight foamed concrete and combination of foamed concrete with polystyrene beads.

Archi-Foam Sdn Bhd which lead by a team of skilled and dedicated people committed to excellence in the design and manufacture of your architectural decorative details and mouldings. Our commitment is to have constant improvements in our products and services to meet the requirements of your project.

Archi-Foam architectural lightweight building products offer the following advantages:-

- a) High productivity
- b) Easy installation
- c) Manufactured to precise specifications
- d) Reduced cost
- e) Versatile
- f) Lightweight over conventional with concrete
- g) Less labour intensive
- h) Better quality and workmanship
- i) Consistent dimension and quality.

Method Statement

Installation

1.0 Setting Out of Datum Level

Making of the datum level on the area where the Archi Foam Architectural Lightweight Moulding to be fixed.

2.0 Surface Preparation

All the loose particles and dust shall be removed from the surface where Archi Foam Architectural Lightweight Moulding to be fixed. The surface shall be clean and dry.

3.0 Preparation of Reinforcement Bar/ Bracket

Fixed the mild steel reinforcement bar at the interval of 600mm- 1200mm to the surface where Archi Foam Architectural Lightweight Moulding to be fixed.

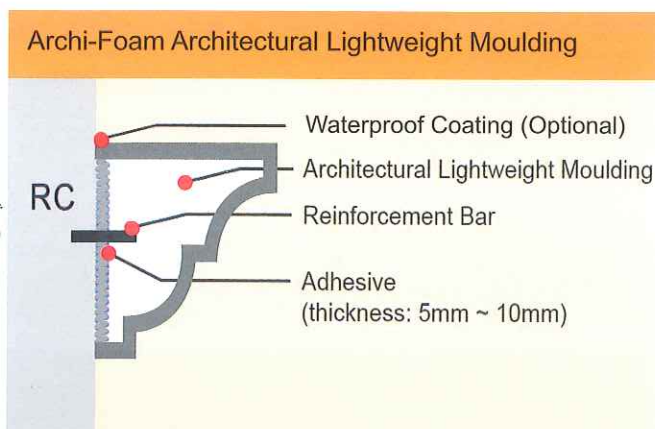
4.0 Fixing of Archi Foam Architectural Lightweight Moulding

AF Plus Bond are applying at an approximately 5mm to 10mm thick to the back surface of the Archi Foam Architectural Lightweight Moulding.

5.0 Pressing Archi Foam Architectural Lightweight Moulding

Firmly press the Archi Foam Architectural Lightweight Moulding to the wall surface and ensure that full contact of the cement adhesive is made. Sometimes, temporary supports are required under the bottom edge of the Archi Foam Architectural Lightweight Moulding until the adhesive is sets, this depending on the weather conditions and size of the Archi Foam Architectural Lightweight Moulding.

Installation:



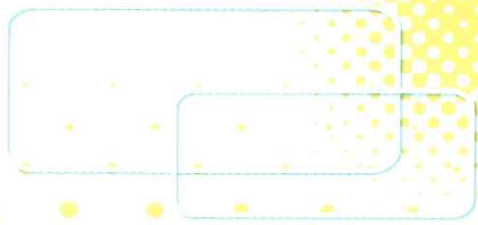
Testing on Site:

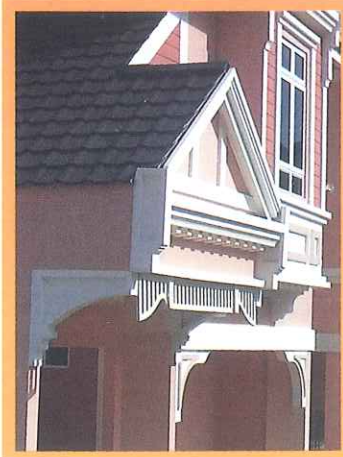


Residential

Residential

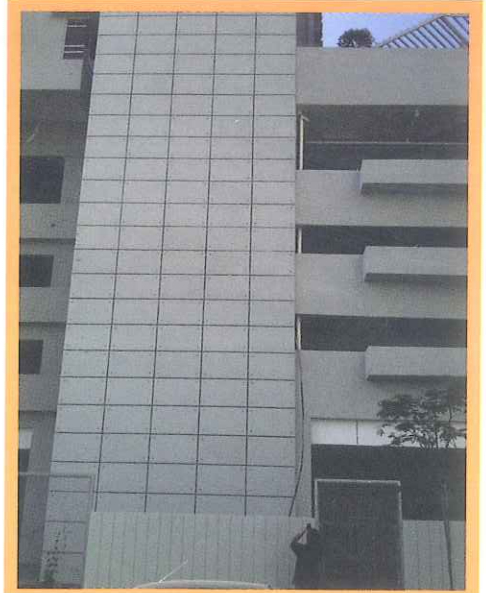






Condominium

Condominium



Condominium

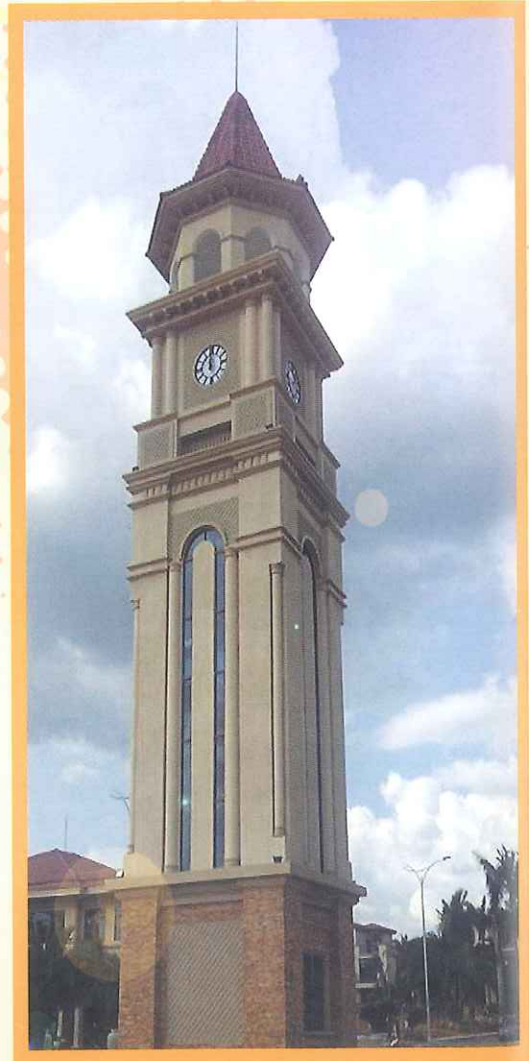
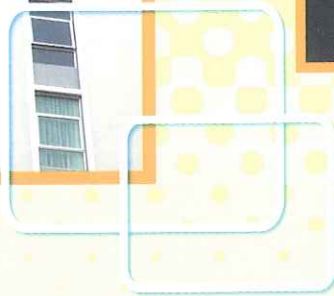
Condominium



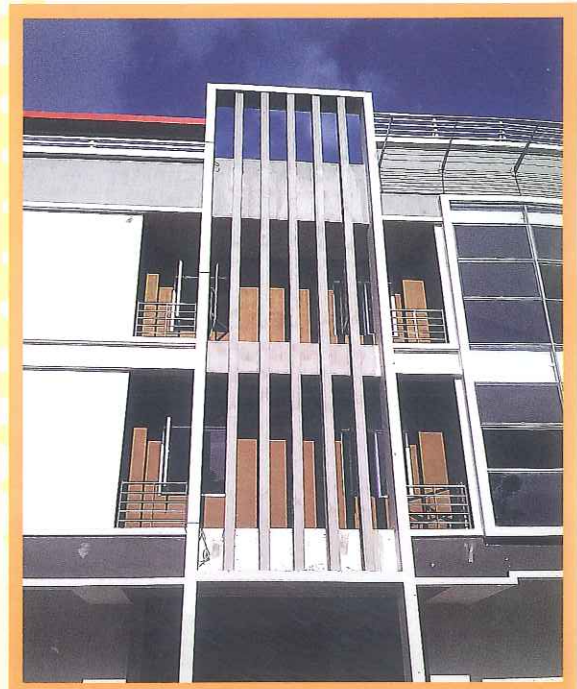
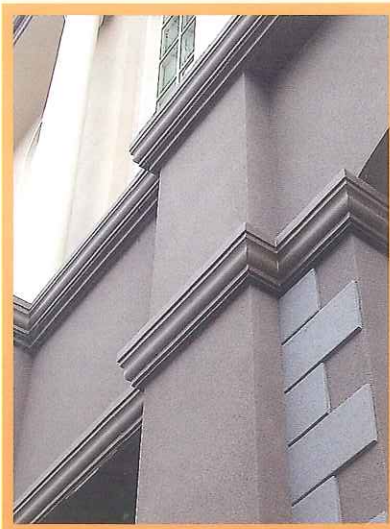
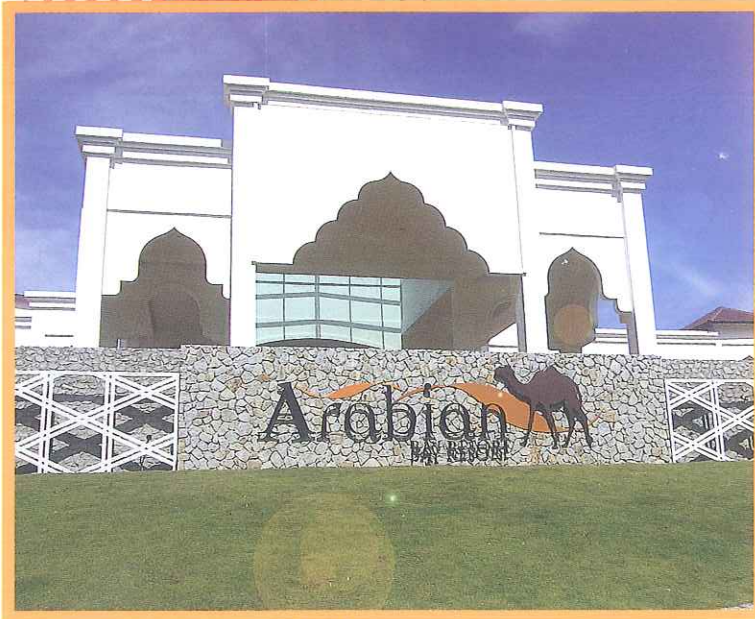
Condominium

Condominium

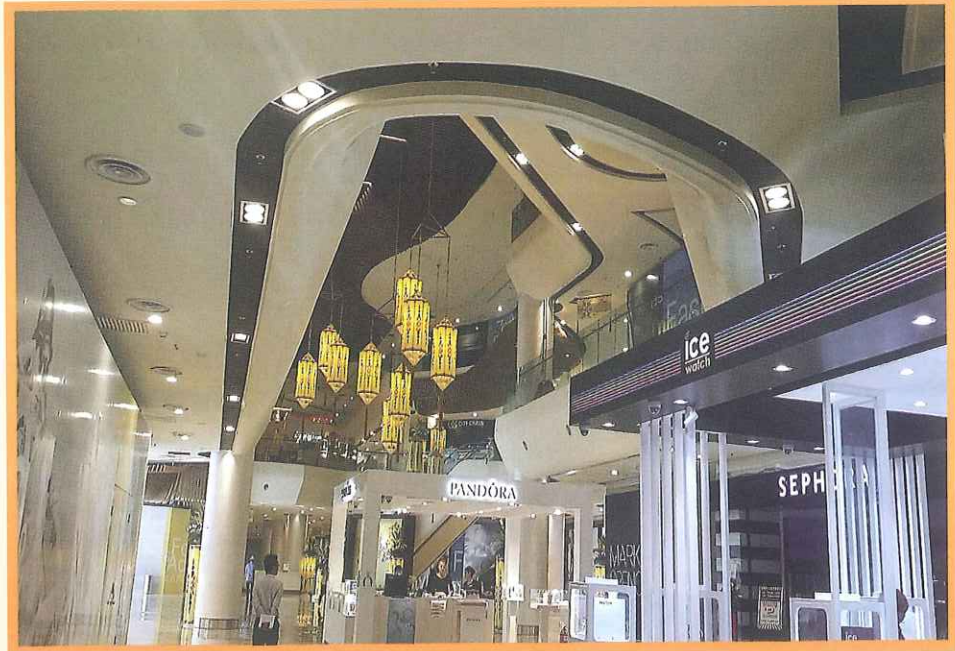
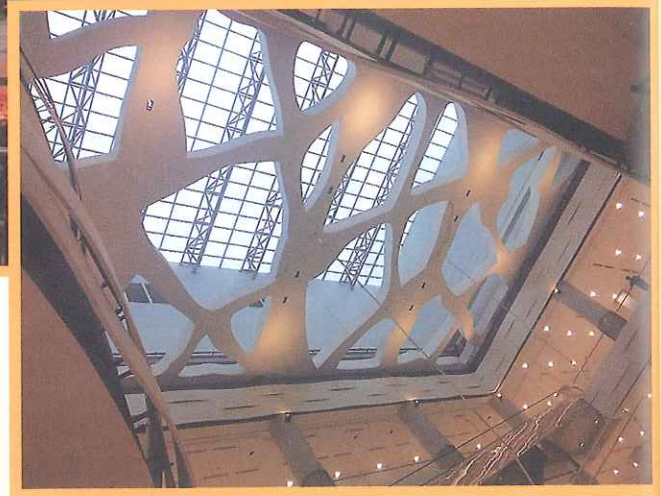






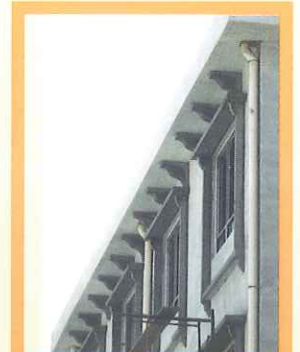
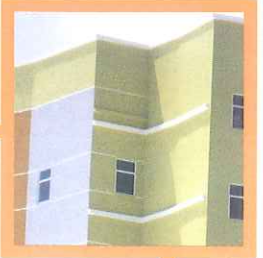




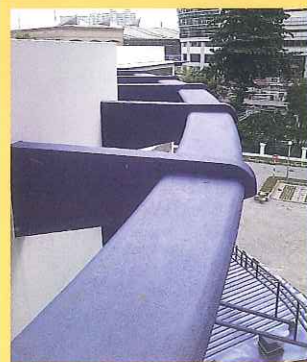


Colleges

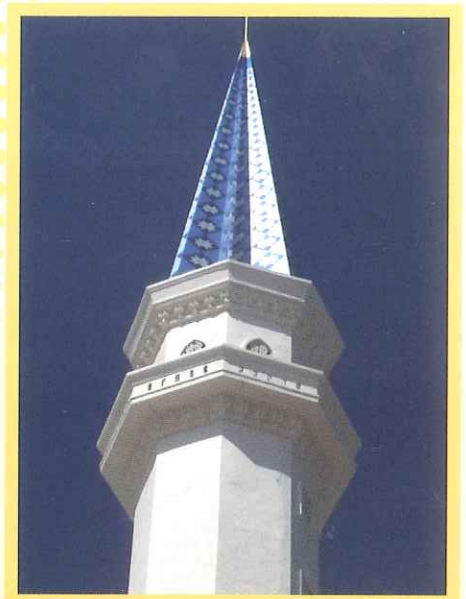
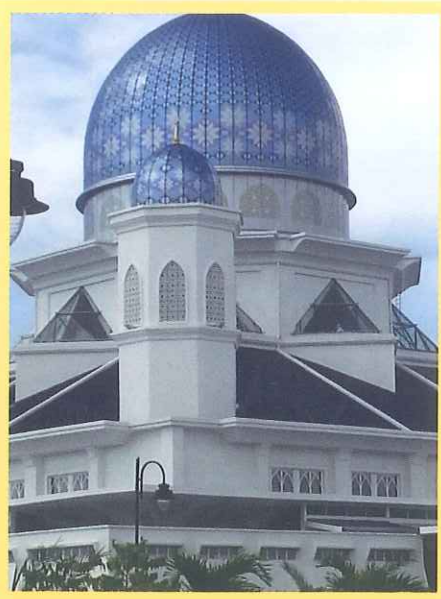
Colleges

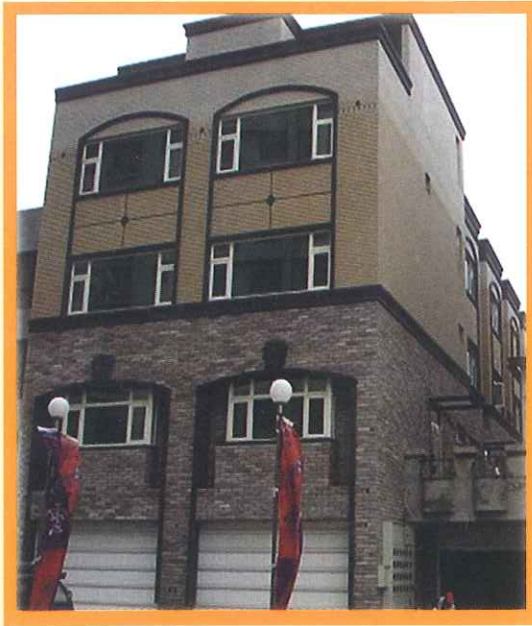


Government Building



Government Building





Product List

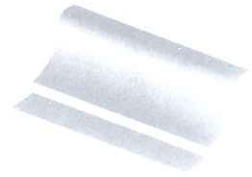
Product List



AF-C100-01
100mm (height)
50 (width)



AF-C100-05
100mm (height)
50 (width)



AF-C100-09
100mm (height)
50 (width)



AF-C100-02
100mm (height)
50 (width)



AF-C100-06
100mm (height)
50 (width)



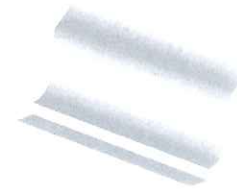
AF-C100-10
100mm (height)
50 (width)



AF-C100-03
100mm (height)
50 (width)



AF-C100-07
100mm (height)
50 (width)



AF-C100-11
100mm (height)
50 (width)



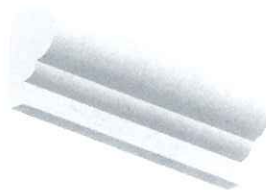
AF-C100-04
100mm (height)
50 (width)



AF-C100-08
100mm (height)
50 (width)



AF-C075-01
75mm (height)
50 (width)



AF-C075-02
75mm (height)
50 (width)



AF-C075-03
75mm (height)
50 (width)



AF-C125-01
125mm (height)
50 (width)



AF-C125-03
125mm (height)
50 (width)

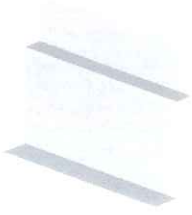


AF-C125-02
125mm (height)
50 (width)



AF-C125-04
127mm (height)
75 (width)

Product List



AF-C150-01
150mm (height)
50 (width)



AF-C150-03
150mm (height)
50 (width)



AF-C150-05
150mm (height)
50 (width)



AF-C150-02
150mm (height)
50 (width)



AF-C150-04
150mm (height)
50 (width)



AF-C150-06
150mm (height)
75 (width)



AF-C175-01
175mm (height)
50 (width)



AF-C175-02
175mm (height)
50 (width)



AF-C175-03
175mm (height)
75 (width)



AF-C175-04
175mm (height)
100 (width)



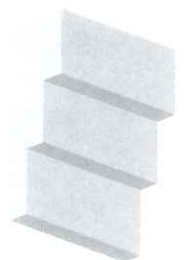
AF-C200-01
200mm (height)
100 (width)



AF-C200-02
200mm (height)
100 (width)



AF-C200-03
200mm (height)
200 (width)



AF-C250-01
250mm (height)
100 (width)



AF-C250-02
250mm (height)
150 (width)



AF-C250-03
250mm (height)
150 (width)



AF-C250-04
250mm (height)
150 (width)



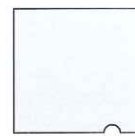
AF-C225-01
225mm (height)
150 (width)



AF-C225-02
225mm (height)
225 (width)



AF-SQ
50mm x 50mm
75mm x 75mm
100mm x 100mm



AF-SQT
50mm x 50mm
75mm x 75mm
100mm x 100mm



AF-REC
50mm x 100mm
75mm x 150mm
100mm x 200mm

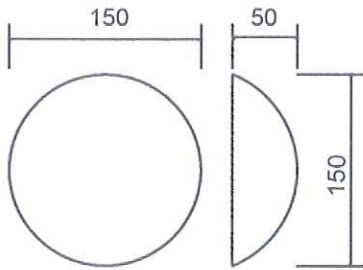


AF-RECT
50mm x 100mm
75mm x 150mm
100mm x 200mm

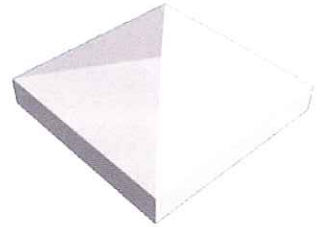
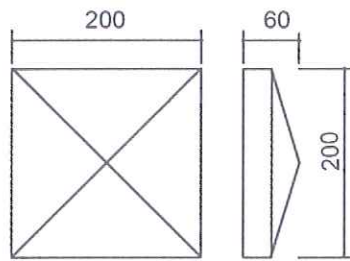
Keystone

Keystone

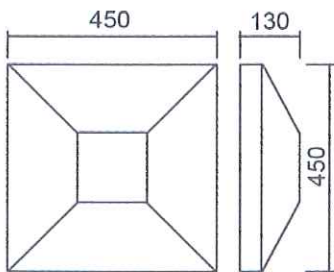
AF-0001



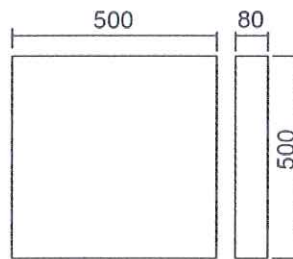
AF-0002



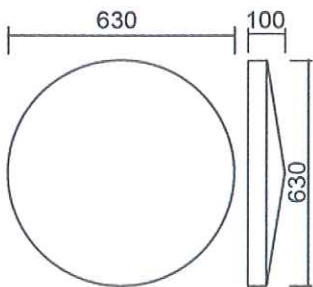
AF-0003



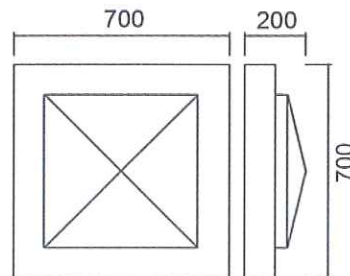
AF-0004



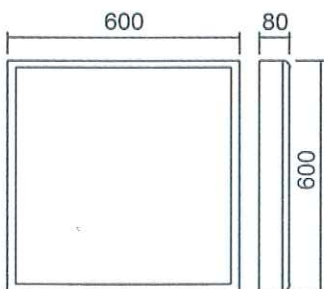
AF-0005



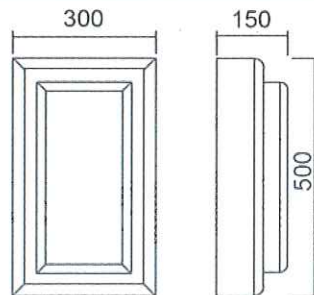
AF-0006



AF-0007



AF-0008





Archi-Foam Sdn Bhd

Lightweight Moulding (708502-U)

5-4, Jalan 10 / 116B, Kuchai Entrepreneurs' Park,
Off Jalan Kuchai Lama, 58100 Kuala Lumpur.
Tel : 7987 8969 / 7987 9969 Fax : 7987 6898
Email: archifoam@yahoo.com
www.archi-foam.com

